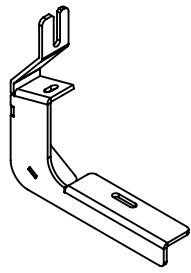
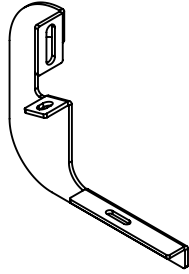


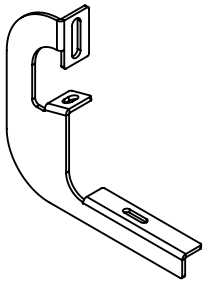
GH-25005  
FITS GM 2500HD & 3500HD (2014 - 2019)



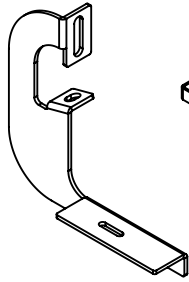
DETAIL 4



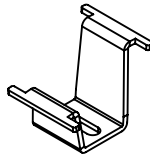
DETAIL 3



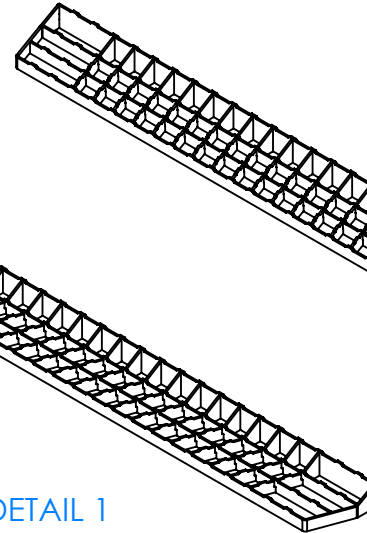
DETAIL 14



DETAIL 15



DETAIL 9



DETAIL 1


DETAIL 2

DET	REV	PartNo	DESCRIPTION	QTY
1	G	103498	MAIN ASSY - RUNNING-BOARD - GM 2500HD & 3500HD (2014 THRU 2019) - CS	-
2	F	103500	MAIN ASSY - RUNNING-BOARD - GM 2500HD & 3500HD (2014 THRU 2019) - RS	-
3	C	103494	BRACKET - CS RUNNING-BOARD - 2015 GMC SIERRA 2500	2
4	A	104138	BRACKET - CS - RUNNING-BOARD - WITH DEF TANK - '14 - '19 GMC SIERRA 2500	2
5	A	00378	WASHER - ST - 8MM	16
6	A	00377	WASHER - ST - 8MM - SPLIT	16
7	A	00376	BOLT - ST - M8 X 30MM - ISO 8.8	16
8	B	103722	ASSY - RUNNING BOARD - CS - 84in	1
9	G	103584	BRACKET - RUNNING BOARD - INNER	8
10	A	00390	BOLT - SS - .313-18 X .750 - FULL THREAD	8
11	A	00391	NUT - GR C ZINC - .313-18 - DIST THREAD LOCKING	8
12	C	103819	MOUNT - LOGO - PUSH IN - MOLDED	2
13	A	901110	STICKER - DOME - GEN Y LOGO	2
14	C	103495	BRACKET - RS RUNNING-BOARD - 2015 GMC SIERRA 2500	3
15	C	103497	BRACKET - RS RUNNING-BOARD DIFFERING - 2015 GMC SIERRA 2500	1
16	B	103723	ASSY - RUNNING BOARD - RS - 84in	1

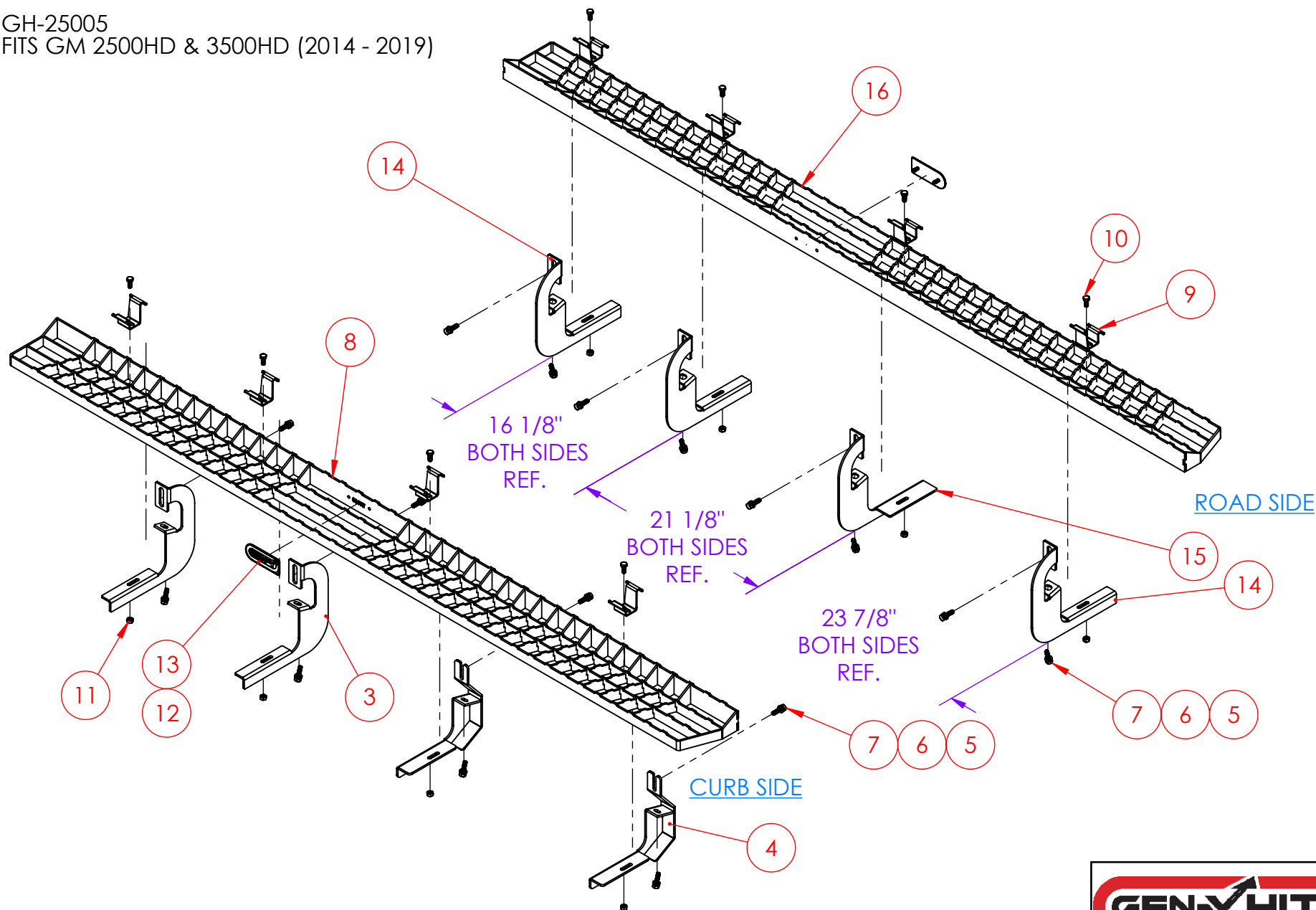
TOOLS NEEDED
RATCHET
1/2" SOCKET
1/2" WRENCH
13mm SOCKET
13mm WRENCH
TORQUE WRENCH

**PROPRIETARY AND CONFIDENTIAL**  
THE INFORMATION CONTAINED IN THIS DRAWING IS THE SOLE PROPERTY OF GEN-Y GROUP. ANY REPRODUCTION IN PART OR AS A WHOLE WITHOUT THE WRITTEN PERMISSION OF GEN-Y GROUP IS STRICTLY PROHIBITED.  
E-MAIL: [mike@genyhitch.com](mailto:mike@genyhitch.com)

A	PRODUCTION RELEASE	4/17/25	LJS	
REV.	DESCRIPTION	DATE	DRW	CHK
	DIMENSIONS ARE IN INCHES			
	TOLERANCES:			
	ANGULAR: MACH ± 1.0			
	TWO PLACE DECIMAL ± .03			
	THREE PLACE DECIMAL ± .015			
	Material	NAME	DATE	
	Material <not specified>	LJS	4/17/25	
	FINISH	CHECKED		
	N/A	AREA		
	DO NOT SCALE DRAWING	PERIMETER		
		TRACKING PART NO:		

			
DESCRIPTION			
MAIN ASSY - RUNNING-BOARD - GM 2500HD & 3500HD (2014 THRU 2019)			
SIZE	DWG. NO.		REV.
A	GH-25005		A
SCALE: 1:24	WEIGHT:	84.420 FT/LB	SHEET 1 OF 3

GH-25005  
FITS GM 2500HD & 3500HD (2014 - 2019)



**PROPRIETARY AND CONFIDENTIAL**  
THE INFORMATION CONTAINED IN THIS  
DRAWING IS THE SOLE PROPERTY OF  
GEN-Y GROUP. ANY REPRODUCTION IN  
PART OR AS A WHOLE WITHOUT THE  
WRITTEN PERMISSION OF GEN-Y GROUP IS  
STRICTLY PROHIBITED.  
E-MAIL: [mike@genyhitch.com](mailto:mike@genyhitch.com)

DIMENSIONS ARE IN INCHES  
TOLERANCES:  
ANGULAR: MACH  $\pm 1.0$   
TWO PLACE DECIMAL  $\pm .03$   
THREE PLACE DECIMAL  $\pm .015$   
Material **Material <not specified>**  
FINISH **N/A**  
DO NOT SCALE DRAWING

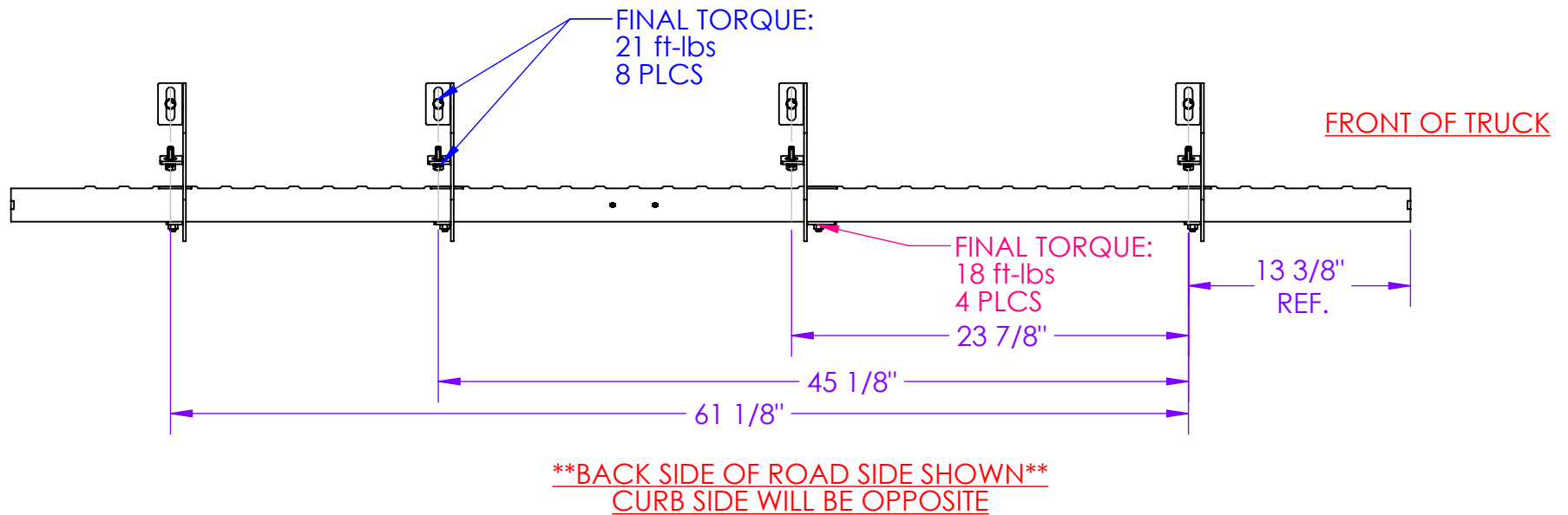
	NAME	DATE
DRAWN	LJS	4/17/25
CHECKED	.	.
AREA	.	.
PERIMETER	.	.
TRACKING PART NO:	.	.

<b>GEN-Y HITCH</b>		
DESCRIPTION		
MAIN ASSY - RUNNING-BOARD - GM 2500HD & 3500HD (2014 THRU 2019)		
SIZE	DWG. NO.	REV.
<b>A</b>	<b>GH-25005</b>	<b>A</b>
SCALE: 1:12	WEIGHT: 84.420 FT/LB	SHEET 2 OF 3

GH-25005  
FITS GM 2500HD & 3500HD (2014 - 2019)

STEP 1 -  
LOOSELY INSTALL ALL BRACKETS, RUNNING BOARD & HARDWARE.

STEP 2 -  
INSURE RUNNING BOARD & BRACKETS ARE PROPERLY ALIGNED THEN TORQUE HARDWARE TO SPECIFICATIONS BELOW.



**PROPRIETARY AND CONFIDENTIAL**  
THE INFORMATION CONTAINED IN THIS DRAWING IS THE SOLE PROPERTY OF GEN-Y GROUP. ANY REPRODUCTION IN PART OR AS A WHOLE WITHOUT THE WRITTEN PERMISSION OF GEN-Y GROUP IS STRICTLY PROHIBITED.  
E-MAIL: [mike@genyhitch.com](mailto:mike@genyhitch.com)

DIMENSIONS ARE IN INCHES  
TOLERANCES:  
ANGULAR: MACH  $\pm 1.0$   
TWO PLACE DECIMAL  $\pm .03$   
THREE PLACE DECIMAL  $\pm .015$   
Material **Material <not specified>**  
FINISH N/A  
DO NOT SCALE DRAWING

	NAME	DATE
DRAWN	LJS	4/17/25
CHECKED	.	.
AREA	.	.
PERIMETER	.	.
TRACKING PART NO:	.	.

GEN-Y HITCH  
NAPPANEE IN

GEN-Y HITCH		
DESCRIPTION		
MAIN ASSY - RUNNING-BOARD - GM 2500HD & 3500HD (2014 THRU 2019)		
SIZE	DWG. NO.	REV.
A	GH-25005	A
SCALE: 1:16	WEIGHT: 42.137 FT/LB	SHEET 3 OF 3