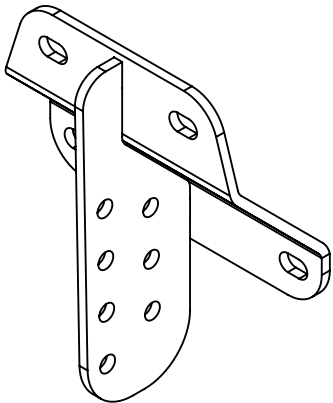
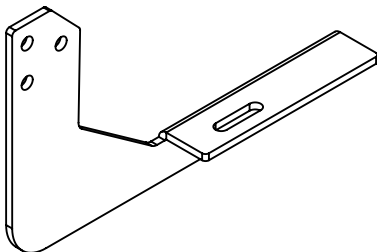


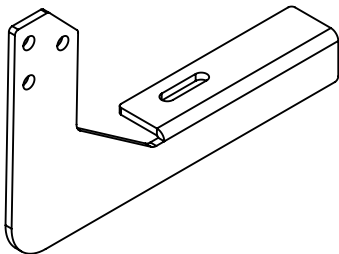
GH-25006  
FITS F150 (2015 THRU 2025), F250 & F350 STD CAB (2017 THRU 2025)



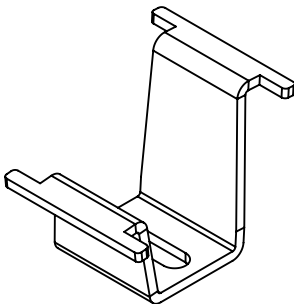
DETAIL 2



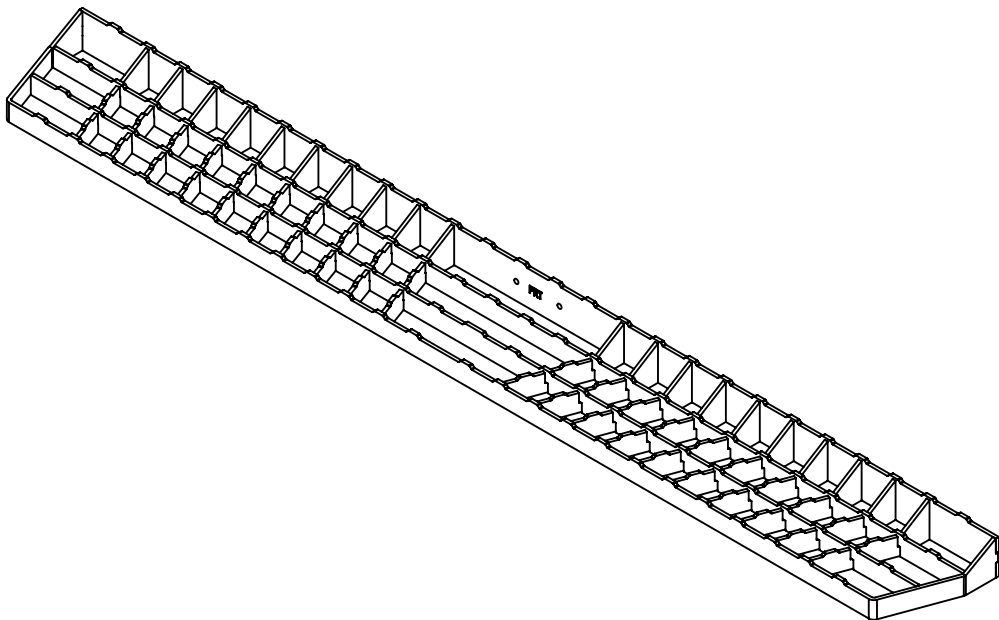
DETAIL 3



DETAIL 4



DETAIL 5



DETAIL 1

DET	REV	PartNo	DESCRIPTION	QTY
1	B	104078	ASSY - RUNNING BOARD - 54in	2
2	B	103709	ASSY - UPPER MOUNT BRACKET - FORD	4
3	C	103712	PLATE - LOWER - BRACKET - RS - FORD	2
4	C	103713	PLATE - LOWER - BRACKET - CS - FORD	2
5	G	103584	BRACKET - RUNNING BOARD - INNER	4
6	A	00377	WASHER - ST - 8MM - SPLIT	12
7	A	00379	NUT - ST - M8 X 1.25MM	12
8	A	00390	BOLT - SS - .313-18 X .750 - FULL THREAD	16
9	A	00391	NUT - GR C ZINC - .313-18 - DIST THREAD LOCKING	16
10	C	103819	MOUNT - LOGO - PUSH IN - MOLDED	2
11	A	901110	STICKER - DOME - GEN Y LOGO	2

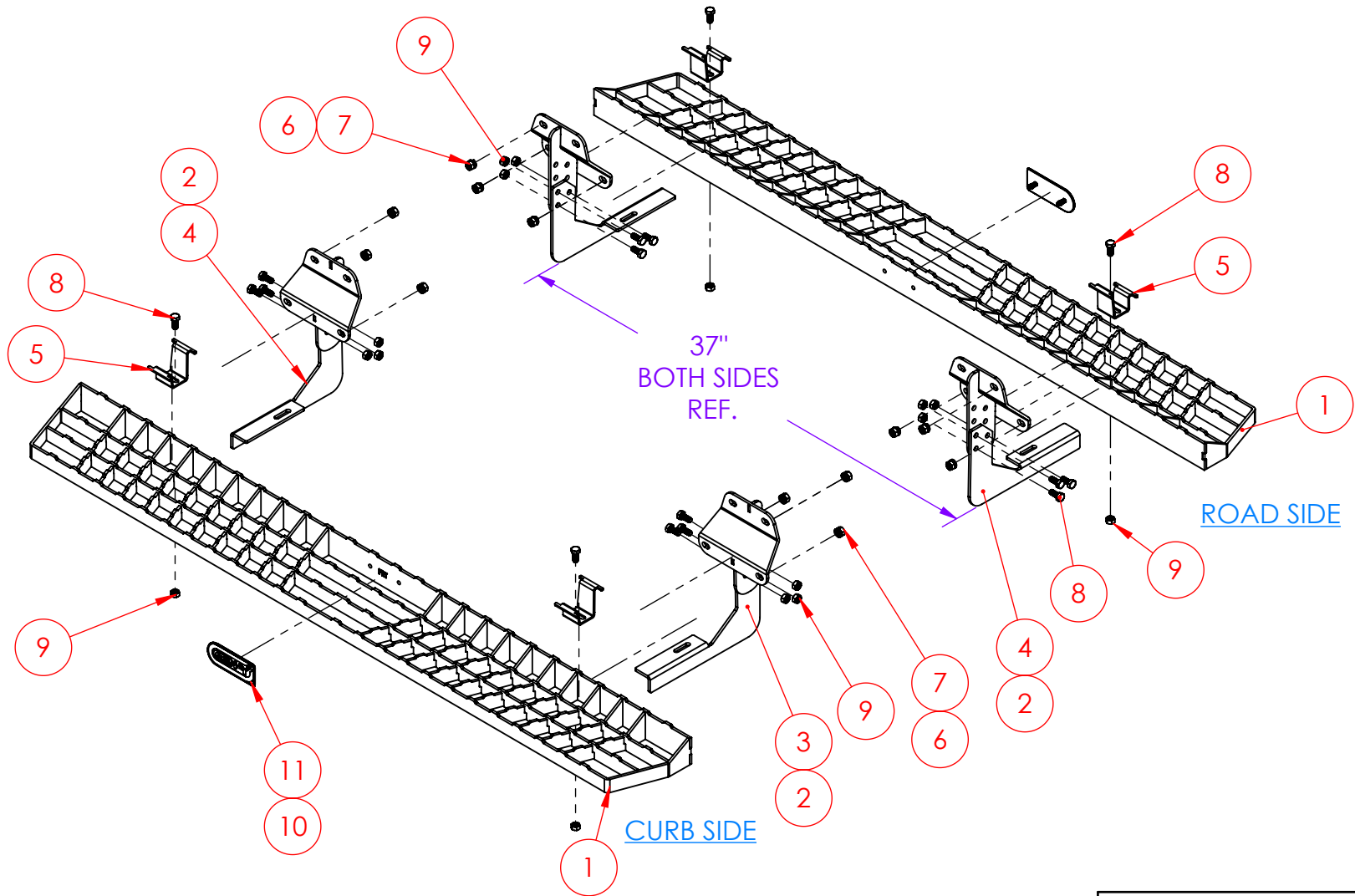
TOOLS NEEDED
1/2" SOCKET
1/2" WRENCH
13mm SOCKET
13mm WRENCH
RATCHET
TORQUE WRENCH

**PROPRIETARY AND CONFIDENTIAL**  
THE INFORMATION CONTAINED IN THIS DRAWING IS THE SOLE PROPERTY OF GEN-Y GROUP. ANY REPRODUCTION IN PART OR AS A WHOLE WITHOUT THE WRITTEN PERMISSION OF GEN-Y GROUP IS STRICTLY PROHIBITED.  
E-MAIL: [mike@genyhitch.com](mailto:mike@genyhitch.com)

A	PRODUCTION RELEASE	4/28/25	LJS	
REV.	DESCRIPTION	DATE	DRW	CHK
	DIMENSIONS ARE IN INCHES			
	TOLERANCES:			
	ANGULAR: MACH ± 1.0			
	TWO PLACE DECIMAL ± .03			
	THREE PLACE DECIMAL ± .015			
	Material	NAME	DATE	
	Material <not specified>	LJS	4/28/25	
	FINISH	CHECKED		
	N/A	AREA		
	DO NOT SCALE DRAWING	PERIMETER		
		TRACKING PART NO:		

GEN-Y HITCH			
DESCRIPTION			
MAIN ASSY - RUNNING BOARD - RS & CS - F150 - (2015 THRU 2025), F250 & F350 STD CAB - (2017 THRU 2025)			
SIZE	DWG. NO.	REV.	
A	GH-25006	A	
SCALE: 1:24	WEIGHT:	55.791 FT/LB	SHEET 1 OF 3

GH-25006  
FITS F150 (2015 THRU 2025), F250 & F350 STD CAB (2017 THRU 2025)



**PROPRIETARY AND CONFIDENTIAL**  
THE INFORMATION CONTAINED IN THIS  
DRAWING IS THE SOLE PROPERTY OF  
GEN-Y GROUP. ANY REPRODUCTION IN  
PART OR AS A WHOLE WITHOUT THE  
WRITTEN PERMISSION OF GEN-Y GROUP IS  
STRICTLY PROHIBITED.  
E-MAIL: [mike@genyhitch.com](mailto:mike@genyhitch.com)

DIMENSIONS ARE IN INCHES	
TOLERANCES:	
ANGULAR: MACH ± 1.0	
TWO PLACE DECIMAL ± .03	
THREE PLACE DECIMAL ± .015	
Material	Material <not specified>
FINISH	N/A
DO NOT SCALE DRAWING	

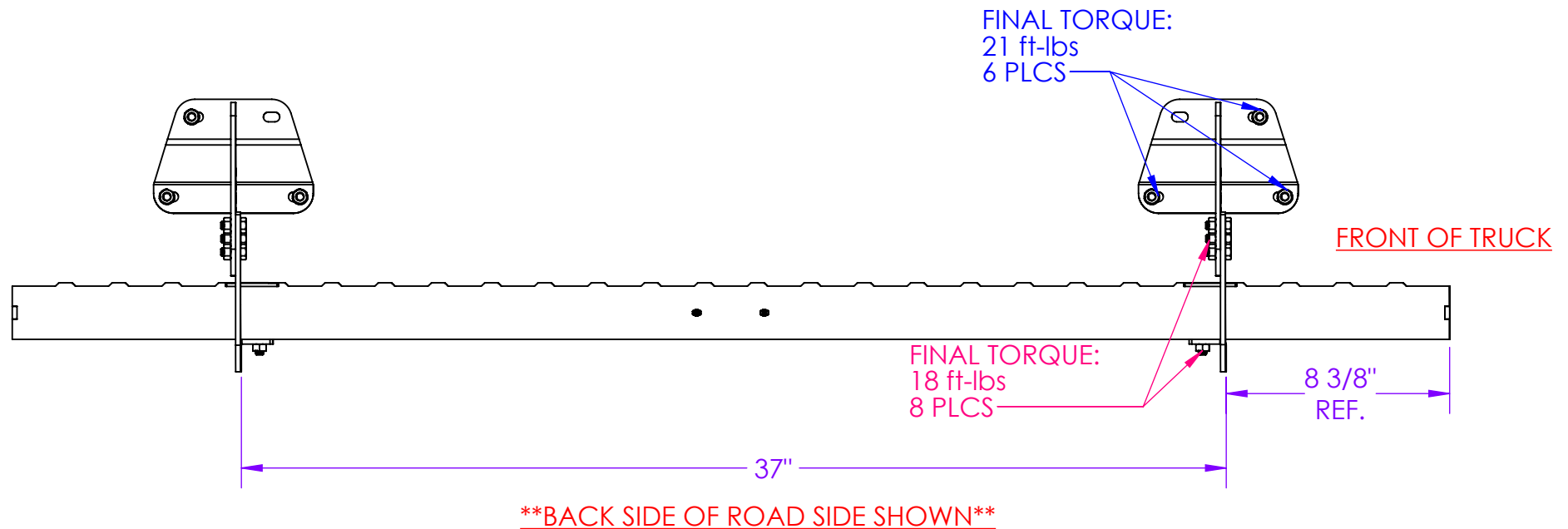
	NAME	DATE
DRAWN	LJS	4/28/25
CHECKED	.	.
AREA	.	
PERIMETER	.	
TRACKING PART NO:		

GEN-Y HITCH NAPPANEE IN	
----------------------------	--

<b>GEN-Y HITCH</b>		
DESCRIPTION		
MAIN ASSY - RUNNING BOARD - RS & CS - F150 - (2015 THRU 2025), F250 & F350 STD CAB - (2017 THRU 2025)		
SIZE	DWG. NO.	REV.
A	GH-25006	A
SCALE: 1:24	WEIGHT: 55.791 FT/LB	SHEET 2 OF 3

GH-25006  
FITS F150 (2015 THRU 2025), F250 & F350 STD CAB (2017 THRU 2025)

- STEP 1 -  
LOOSELY INSTALL ALL BRACKETS, RUNNING BOARD & HARDWARE.
- STEP 2 -  
INSURE RUNNING BOARD & BRACKETS ARE PROPERLY ALIGNED THEN TORQUE HARDWARE TO SPECIFICATIONS BELOW.



**PROPRIETARY AND CONFIDENTIAL**  
THE INFORMATION CONTAINED IN THIS  
DRAWING IS THE SOLE PROPERTY OF  
GEN-Y GROUP. ANY REPRODUCTION IN  
PART OR AS A WHOLE WITHOUT THE  
WRITTEN PERMISSION OF GEN-Y GROUP IS  
STRICTLY PROHIBITED.  
E-MAIL: [mike@genyhitch.com](mailto:mike@genyhitch.com)

DIMENSIONS ARE IN INCHES  
TOLERANCES:  
ANGULAR: MACH  $\pm 1.0$   
TWO PLACE DECIMAL  $\pm .03$   
THREE PLACE DECIMAL  $\pm .015$   
Material **Material <not specified>**  
FINISH **N/A**  
DO NOT SCALE DRAWING

	NAME	DATE
DRAWN	LJS	4/28/25
CHECKED	.	.
AREA	.	.
PERIMETER	.	.
TRACKING PART NO:	.	.

**GEN-Y HITCH  
NAPPANEE IN**

<b>GEN-Y HITCH</b>		
DESCRIPTION <b>MAIN ASSY - RUNNING BOARD - RS &amp; CS - F150 - (2015 THRU 2025), F250 &amp; F350 STD CAB - (2017 THRU 2025)</b>		
SIZE <b>A</b>	DWG. NO. <b>GH-25006</b>	REV. <b>A</b>
SCALE: 1:12	WEIGHT: <b>27.896 FT/LB</b>	SHEET 3 OF 3