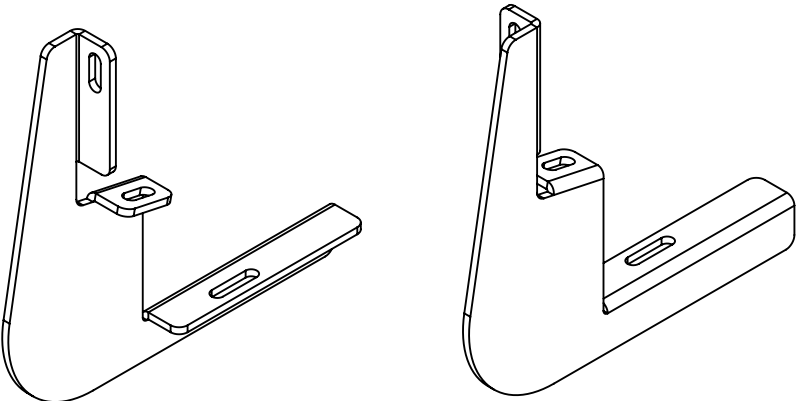
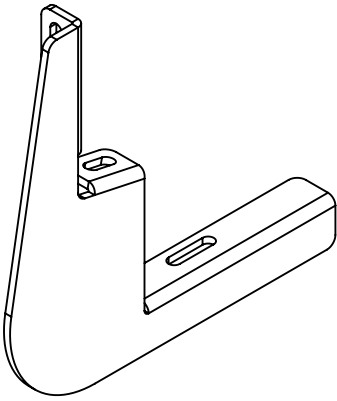


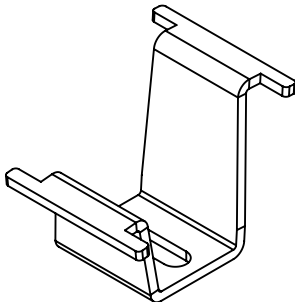
GH-25007
FITS GM 2500 & 3500 STD CAB (2020 THRU 2025)



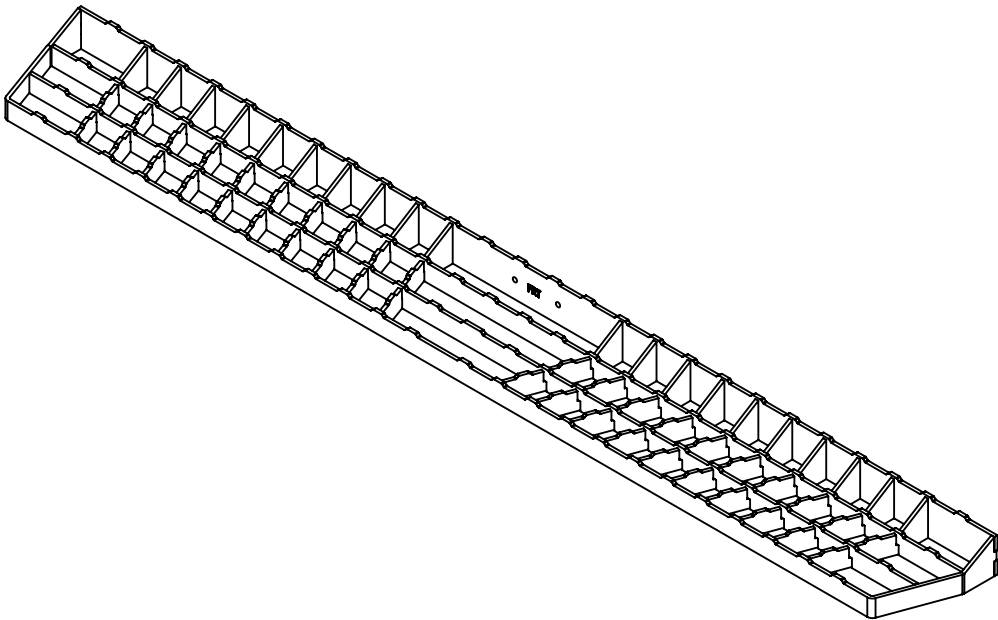
DETAIL 3



DETAIL 2



DETAIL 7



DETAIL 1

DET	REV	PartNo	DESCRIPTION	QTY
1	B	104078	ASSY - RUNNING BOARD - 54in	2
2	D	102972	BRACKET - RS - 3500HD	2
3	C	102973	BRACKET - CS - 3500HD	2
4	A	00376	BOLT - ST - M8 X 30MM - ISO 8.8	8
5	A	00377	WASHER - ST - 8MM - SPLIT	8
6	A	00378	WASHER - ST - 8MM	8
7	G	103584	BRACKET - RUNNING BOARD - INNER	4
8	A	00390	BOLT - SS - .313-18 X .750 - FULL THREAD	4
9	A	00391	NUT - GR C ZINC - .313-18 - DIST THREAD LOCKING	4
10	C	103819	MOUNT - LOGO - PUSH IN - MOLDED	2
11	A	901110	STICKER - DOME - GEN Y LOGO	2

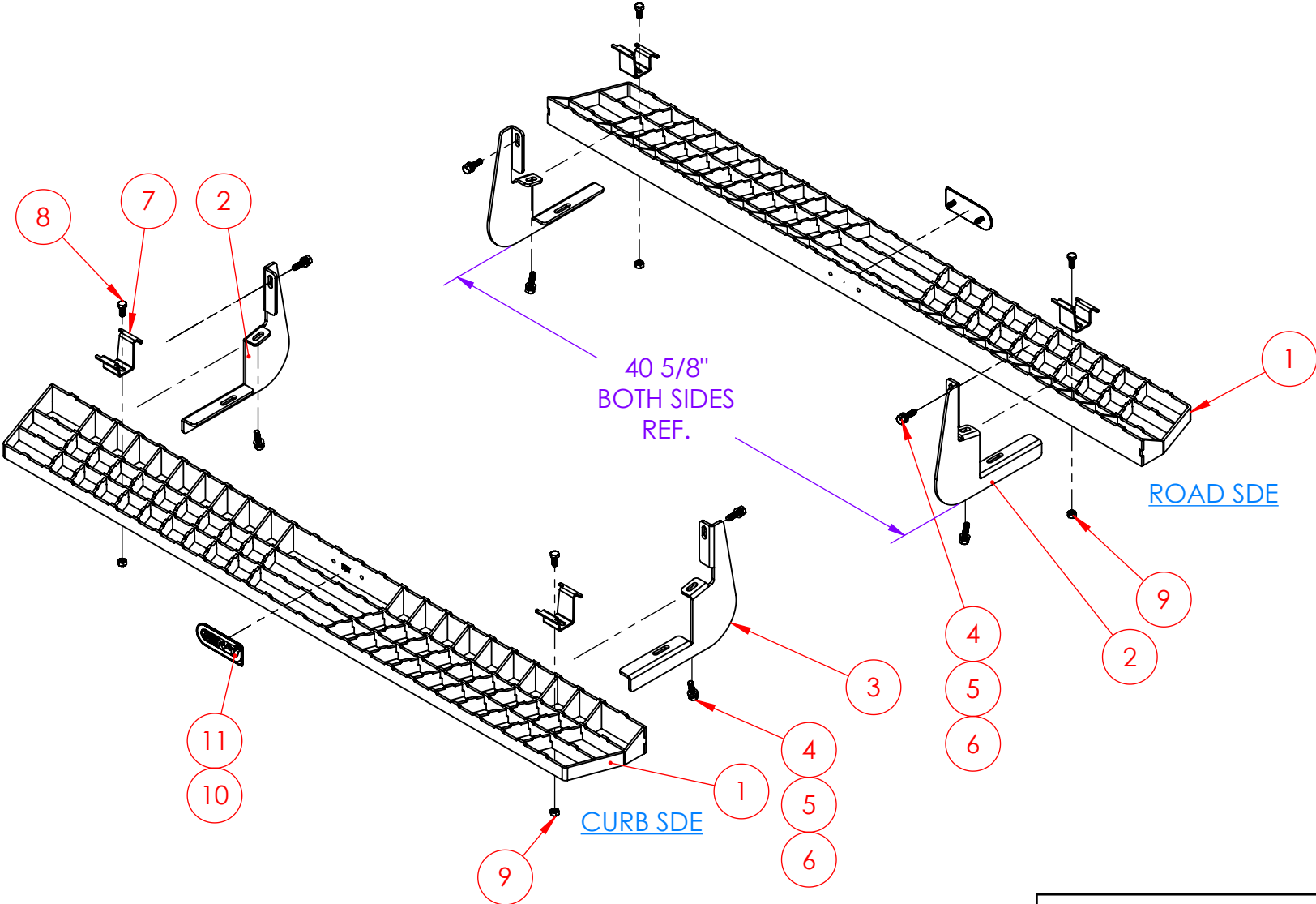
TOOLS NEEDED
1/2" SOCKET
1/2" WRENCH
13mm SOCKET
13mm WRENCH
RATCHET
TORQUE WRENCH

PROPRIETARY AND CONFIDENTIAL
THE INFORMATION CONTAINED IN THIS DRAWING IS THE SOLE PROPERTY OF GEN-Y GROUP. ANY REPRODUCTION IN PART OR AS A WHOLE WITHOUT THE WRITTEN PERMISSION OF GEN-Y GROUP IS STRICTLY PROHIBITED.
E-MAIL: mike@genyhitch.com

A	PRODUCTION RELEASE	4/28/25	LJS	
REV.	DESCRIPTION	DATE	DRW	CHK
	DIMENSIONS ARE IN INCHES			
	TOLERANCES:			
	ANGULAR: MACH ± 1.0			
	TWO PLACE DECIMAL ± .03			
	THREE PLACE DECIMAL ± .015			
	Material	NAME	DATE	
	Material <not specified>	LJS	4/28/25	
	FINISH	CHECKED		
	N/A	AREA		
	DO NOT SCALE DRAWING	PERIMETER		
		TRACKING PART NO:		

GEN-Y HITCH			
DESCRIPTION			
MAIN ASSY - RUNNING BOARD - RS & CS - GM 2500 & 3500 STD CAB - (2020 THRU 2025)			
SIZE	DWG. NO.	REV.	
A	GH-25007	A	
SCALE:1:24	WEIGHT:	50.858 FT/LB	SHEET 1 OF 3

GH-25007
FITS GM 2500 & 3500 STD CAB (2020 THRU 2025)



PROPRIETARY AND CONFIDENTIAL
THE INFORMATION CONTAINED IN THIS
DRAWING IS THE SOLE PROPERTY OF
GEN-Y GROUP. ANY REPRODUCTION IN
PART OR AS A WHOLE WITHOUT THE
WRITTEN PERMISSION OF GEN-Y GROUP IS
STRICTLY PROHIBITED.
E-MAIL: mike@genyhitch.com

DIMENSIONS ARE IN INCHES	
TOLERANCES:	
ANGULAR: MACH ± 1.0	
TWO PLACE DECIMAL ± .03	
THREE PLACE DECIMAL ± .015	
Material	Material <not specified>
FINISH	N/A
DO NOT SCALE DRAWING	

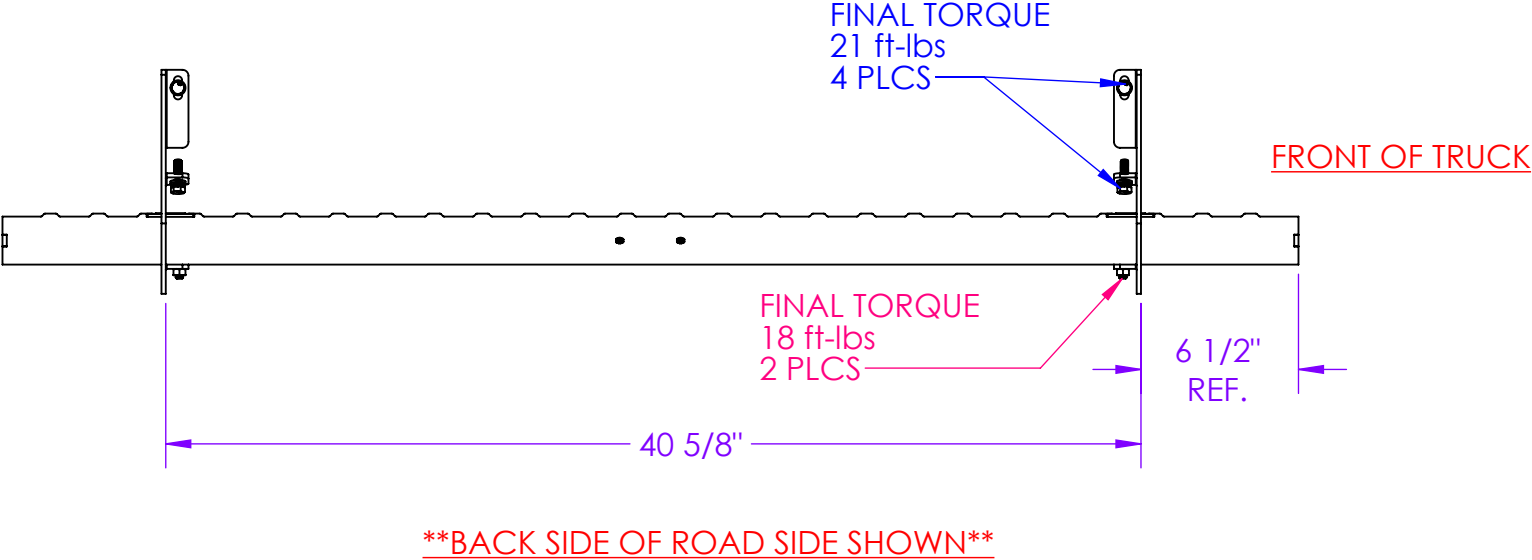
	NAME	DATE
DRAWN	LJS	4/28/25
CHECKED	.	.
AREA	.	
PERIMETER	.	
TRACKING PART NO:		

GEN-Y HITCH NAPPANEE IN	
----------------------------	--

DESCRIPTION MAIN ASSY - RUNNING BOARD - RS & CS - GM 2500 & 3500 STD CAB - (2020 THRU 2025)		
SIZE A	DWG. NO. GH-25007	REV. A
SCALE: 1:24	WEIGHT: 50.858 FT/LB	SHEET 2 OF 3

GH-25007
FITS GM 2500 & 3500 STD CAB (2020 THRU 2025)

- STEP 1 -
LOOSELY INSTALL ALL BRACKETS, RUNNING BOARDS & HARDWARE
STEP 2 -
INSURE RUNNING BOARD & BRACKETS ARE PROPERLY ALIGNED THEN TORQUE HARDWARE



PROPRIETARY AND CONFIDENTIAL
THE INFORMATION CONTAINED IN THIS
DRAWING IS THE SOLE PROPERTY OF
GEN-Y GROUP. ANY REPRODUCTION IN
PART OR AS A WHOLE WITHOUT THE
WRITTEN PERMISSION OF GEN-Y GROUP IS
STRICTLY PROHIBITED.
E-MAIL: mike@genyhitch.com

DIMENSIONS ARE IN INCHES	
TOLERANCES:	
ANGULAR: MACH	± 1.0
TWO PLACE DECIMAL	± .03
THREE PLACE DECIMAL	± .015
Material	Material <not specified>
FINISH	N/A
DO NOT SCALE DRAWING	

	NAME	DATE
DRAWN	LJS	4/28/25
CHECKED	.	.
AREA	.	.
PERIMETER	.	.
TRACKING PART NO:	.	.
GEN-Y HITCH NAPPANEE IN		

DESCRIPTION
**MAIN ASSY - RUNNING BOARD - RS & CS -
GM 2500 & 3500 STD CAB - (2020 THRU 2025)**

SIZE A	DWG. NO. GH-25007	REV. A
SCALE: 1:24	WEIGHT: 25.429 FT/LB	SHEET 3 OF 3