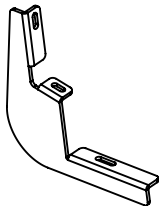
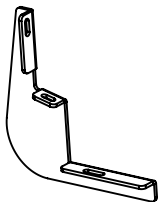


RUNNING BOARD INSTALLATION INSTRUCTIONS

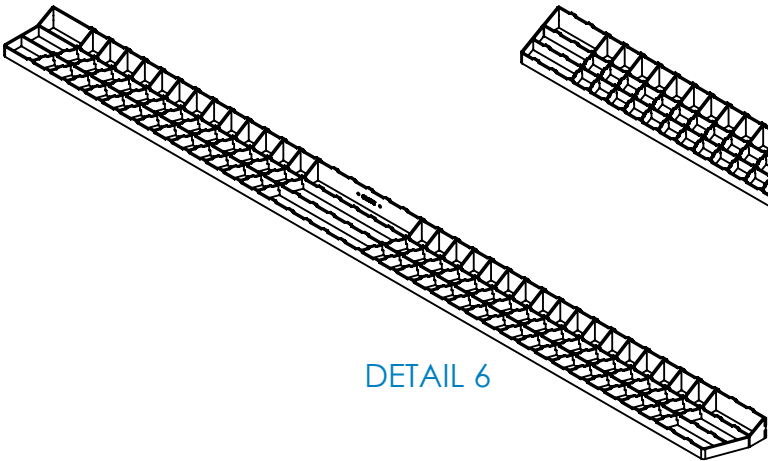
GH-25001
FITS GM 1500 (2019 THRU 2025),
2500HD & 3500HD (2020 THRU 2025)



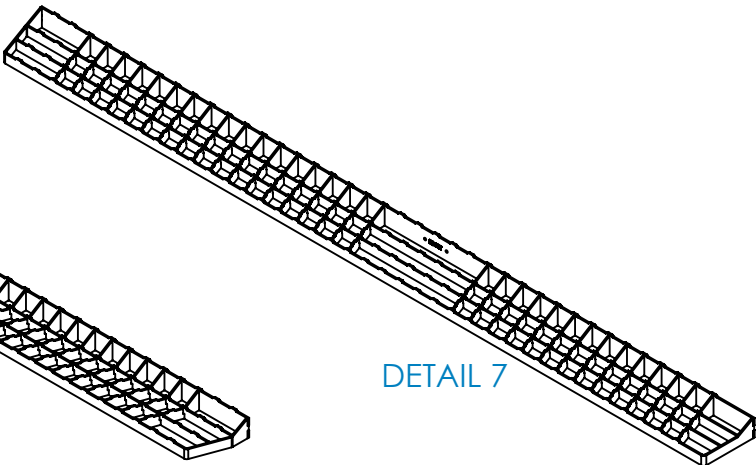
DETAIL 1



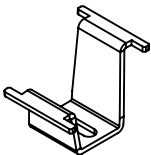
DETAIL 2



DETAIL 6



DETAIL 7



DETAIL 8

DET	REV	PART NO	DESCRIPTION	QTY
1	C	102973	BRACKET - CS - 3500HD	4
2	D	102972	BRACKET - RS - 3500HD	4
3	A	00376	BOLT - ST - M8 X 30MM - ISO 8.8	16
4	A	00377	WASHER - ST - 8MM - SPLIT	16
5	A	00378	WASHER - ST - 8MM	16
6	B	103722	ASSY - RUNNING BOARD - CS - 84IN	1
7	B	103723	ASSY - RUNNING BOARD - RS - 84IN	1
8	G	103584	BRACKET - RUNNING BOARD - INNER	8
9	A	00390	BOLT - SS - .313-18 X .750 - FULL THREAD	8
10	A	00391	NUT - GR C ZINC - .313-18 - DIST THREAD LOCKING	8
11	C	103819	MOUNT - LOGO - PUSH IN - MOLDED	2
12	A	901110	GRAPHICS	2

TOOLS NEEDED

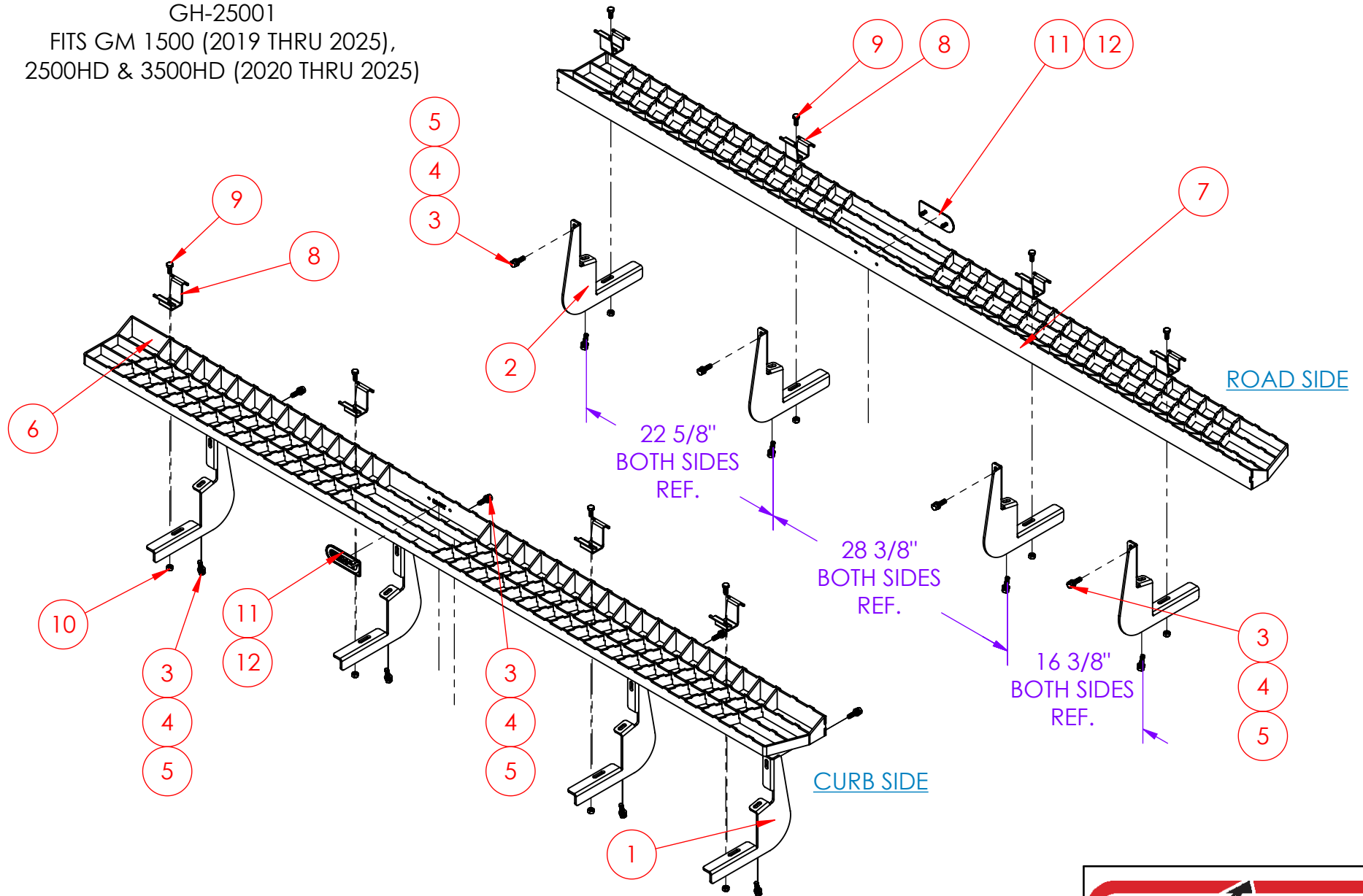
- 1/2" SOCKET
- 1/2" WRENCH
- 13mm SOCKET
- 13mm WRENCH
- RATCHET
- TORQUE WRENCH

PROPRIETARY AND CONFIDENTIAL
THE INFORMATION CONTAINED IN THIS
DRAWING IS THE SOLE PROPERTY OF
GEN-Y GROUP. ANY REPRODUCTION IN
PART OR AS A WHOLE WITHOUT THE
WRITTEN PERMISSION OF GEN-Y GROUP IS
STRICTLY PROHIBITED.
E-MAIL: mike@genyhitch.com

A	PRODUCTION RELEASE		03/28/25	FPW	
REV.	DESCRIPTION		DATE	DRW	CHK
DIMENSIONS ARE IN INCHES TOLERANCES: ANGULAR: MACH ± 1.0 TWO PLACE DECIMAL ± .03 THREE PLACE DECIMAL ± .015 Material STEEL FINISH N/A DO NOT SCALE DRAWING				NAME	DATE
				FPW	03/28/25
				CHECKED	.
				AREA	.
				PERIMETER	.
			TRACKING PART NO:		
			GEN-Y HITCH NAPPANEE IN		

DESCRIPTION			
MAIN ASSY - RUNNING BOARD - GM 1500 (2019 THRU 2025), 2500HD & 3500HD (2020 THRU 2025)			
SIZE	DWG. NO.	REV.	
A	GH-25001	A	
SCALE: 1:10	WEIGHT:	83.333 FT/LB	SHEET 1 OF 3

GH-25001
 FITS GM 1500 (2019 THRU 2025),
 2500HD & 3500HD (2020 THRU 2025)



PROPRIETARY AND CONFIDENTIAL
 THE INFORMATION CONTAINED IN THIS
 DRAWING IS THE SOLE PROPERTY OF
 GEN-Y GROUP. ANY REPRODUCTION IN
 PART OR AS A WHOLE WITHOUT THE
 WRITTEN PERMISSION OF GEN-Y GROUP IS
 STRICTLY PROHIBITED.
 E-MAIL: mike@genyhitch.com

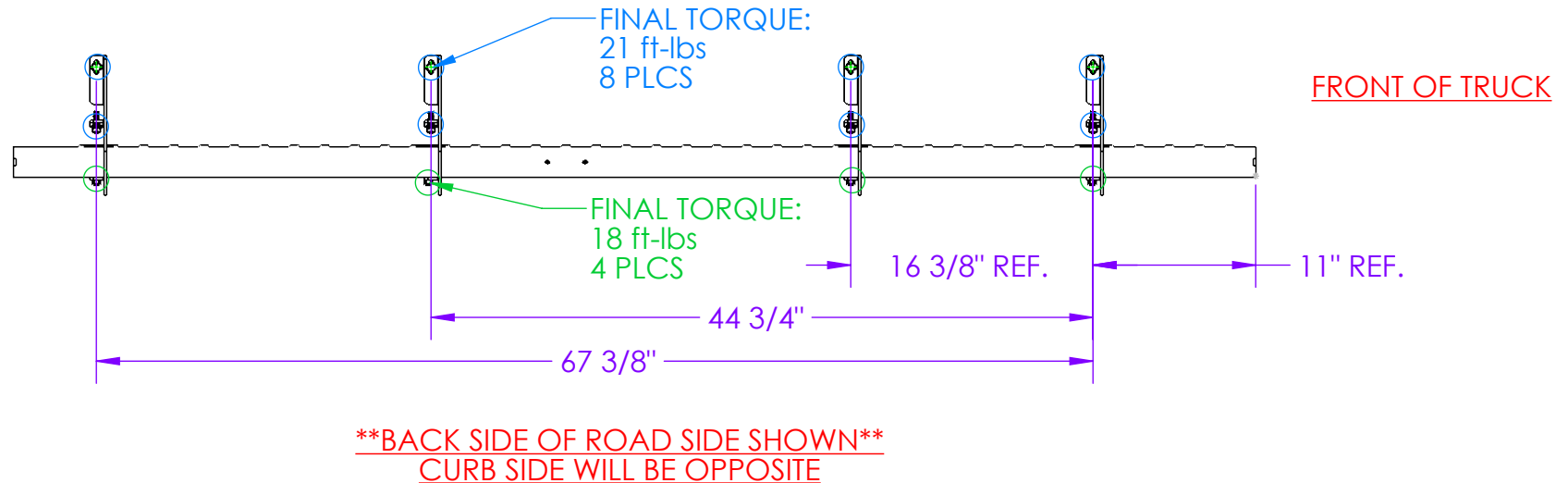
DIMENSIONS ARE IN INCHES	
TOLERANCES:	
ANGULAR: MACH ± 1.0	
TWO PLACE DECIMAL ± .03	
THREE PLACE DECIMAL ± .015	
Material	STEEL
FINISH	N/A
DO NOT SCALE DRAWING	

	NAME	DATE
DRAWN	FPW	03/28/25
CHECKED	.	.
AREA	.	.
PERIMETER	.	.
TRACKING PART NO:	GEN-Y HITCH NAPPANEE IN	

GEN-Y HITCH			
DESCRIPTION MAIN ASSY - RUNNING BOARD - GM 1500 (2019 THRU 2025), 2500HD & 3500HD (2020 THRU 2025)			
SIZE A	DWG. NO. GH-25001	REV. A	
SCALE: 1:12	WEIGHT: 83.333 FT/LB	SHEET 2 OF 3	

GH-25001
FITS GM 1500 (2019 THRU 2025),
2500HD & 3500HD (2020 THRU 2025)

- STEP 1 -
LOOSELY INSTALL ALL BRACKETS, RUNNING BOARD & HARDWARE.
- STEP 2 -
INSURE RUNNING BOARD & BRACKETS ARE PROPERLY ALIGNED THEN TORQUE HARDWARE TO SPECIFICATIONS BELOW.



PROPRIETARY AND CONFIDENTIAL
THE INFORMATION CONTAINED IN THIS
DRAWING IS THE SOLE PROPERTY OF
GEN-Y GROUP. ANY REPRODUCTION IN
PART OR AS A WHOLE WITHOUT THE
WRITTEN PERMISSION OF GEN-Y GROUP IS
STRICTLY PROHIBITED.
E-MAIL: mike@genyhitch.com

DIMENSIONS ARE IN INCHES
TOLERANCES:
ANGULAR: MACH ± 1.0
TWO PLACE DECIMAL $\pm .03$
THREE PLACE DECIMAL $\pm .015$
Material **STEEL**
FINISH **N/A**
DO NOT SCALE DRAWING

	NAME	DATE
DRAWN	FPW	03/28/25
CHECKED	.	.
AREA	.	.
PERIMETER	.	.
TRACKING PART NO:	GEN-Y HITCH NAPPANEE IN	

GEN-Y HITCH		
DESCRIPTION MAIN ASSY - RUNNING BOARD - GM 1500 (2019 THRU 2025), 2500HD & 3500HD (2020 THRU 2025)		
SIZE A	DWG. NO. GH-25001	REV. A
SCALE: 1:12	WEIGHT: 83.333 FT/LB	SHEET 3 OF 3