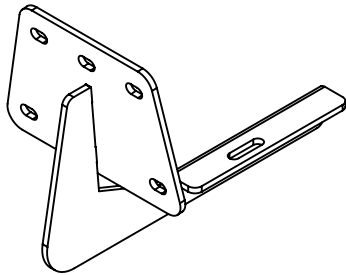
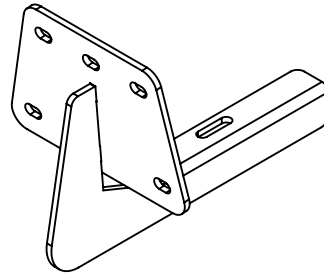


GH-25002  
FITS RAM 1500 (2019 THRU 2025)

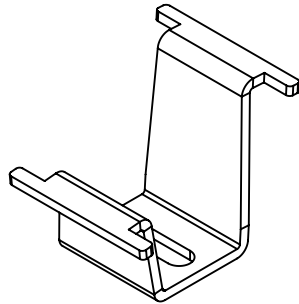


DETAIL 1

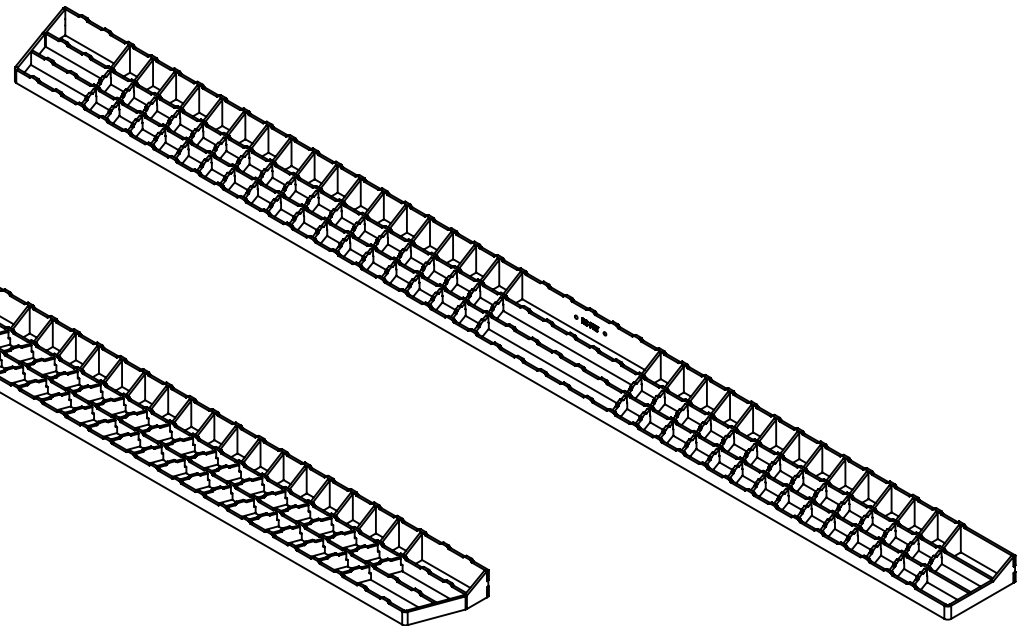


DETAIL 10

DET	REV	PartNo	DESCRIPTION	QTY
1	B	103095	BRACKET ASSY - RUNNING BOARD - CS - TRX	3
2	A	00377	WASHER - ST - 8MM - SPLIT	18
3	A	00379	NUT - ST - M8 X 1.25MM	18
4	B	103722	ASSY - RUNNING BOARD - CS - 84in	1
5	G	103584	BRACKET - RUNNING BOARD - INNER	6
6	A	00390	BOLT - SS - .313-18 X .750 - FULL THREAD	6
7	A	00391	NUT - GR C ZINC - .313-18 - DIST THREAD LOCKING	6
8	C	103819	MOUNT - LOGO - PUSH IN - MOLDED	2
9	A	901110	STICKER - DOME - GEN Y LOGO	2
10	B	103094	BRACKET ASSY - RUNNING BOARD - RS - TRX	3
11	B	103723	ASSY - RUNNING BOARD - RS - 84in	1



DETAIL 5



DETAIL 4

DETAIL 11

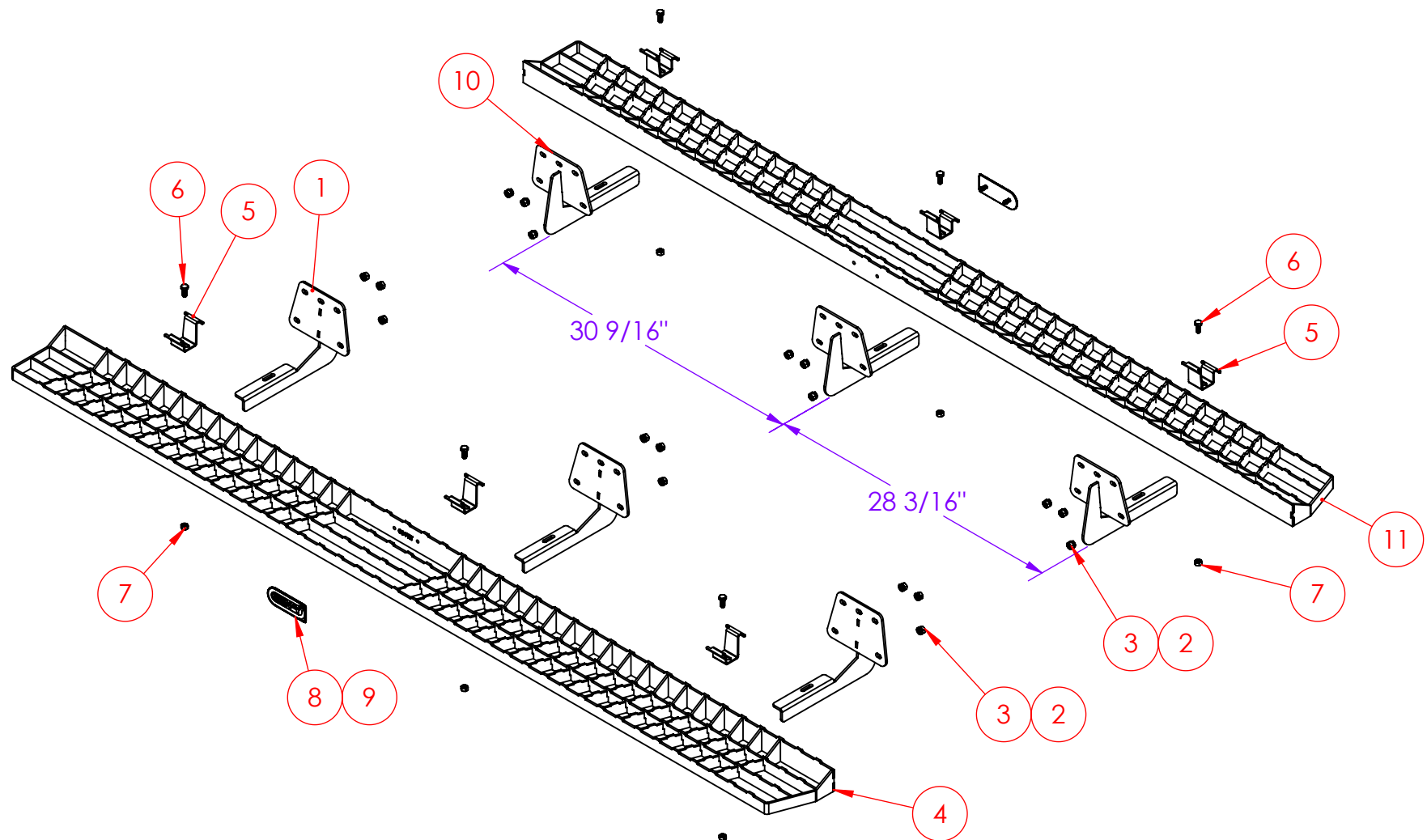
TOOLS NEEDED
RATCHET
1/2" SOCKET
1/2" WRENCH
13mm SOCKET
13mm WRENCH
TORQUE WRENCH

**PROPRIETARY AND CONFIDENTIAL**  
THE INFORMATION CONTAINED IN THIS DRAWING IS THE SOLE PROPERTY OF GEN-Y GROUP. ANY REPRODUCTION IN PART OR AS A WHOLE WITHOUT THE WRITTEN PERMISSION OF GEN-Y GROUP IS STRICTLY PROHIBITED.  
E-MAIL: mike@genyhitch.com

A	PRODUCTION RELEASE	4/24/25	LJS	
REV.	DESCRIPTION	DATE	DRW	CHK
DIMENSIONS ARE IN INCHES		NAME	DATE	
TOLERANCES:		DRAWN	4/24/25	
ANGULAR: MACH $\pm 1.0$		CHECKED	.	
TWO PLACE DECIMAL $\pm .03$		AREA	.	
THREE PLACE DECIMAL $\pm .015$		PERIMETER	.	
Material	Material <not specified>	TRACKING PART NO:	GEN-Y HITCH NAPPANEE IN	
FINISH	N/A			
DO NOT SCALE DRAWING		.		

GEN-Y HITCH			
DESCRIPTION			
MAIN ASSY - RUNNING BOARD - RAM 1500 (2019 THRU 2025)			
SIZE	DWG. NO.	REV.	
A	GH-25002	A	
SCALE:1:32	WEIGHT:	81.020 FT/LB	SHEET 1 OF 3

GH-25002  
FITS RAM 1500 (2019 THRU 2025)



**PROPRIETARY AND CONFIDENTIAL**  
THE INFORMATION CONTAINED IN THIS  
DRAWING IS THE SOLE PROPERTY OF  
GEN-Y GROUP. ANY REPRODUCTION IN  
PART OR AS A WHOLE WITHOUT THE  
WRITTEN PERMISSION OF GEN-Y GROUP IS  
STRICTLY PROHIBITED.  
E-MAIL: mike@genyhitch.com

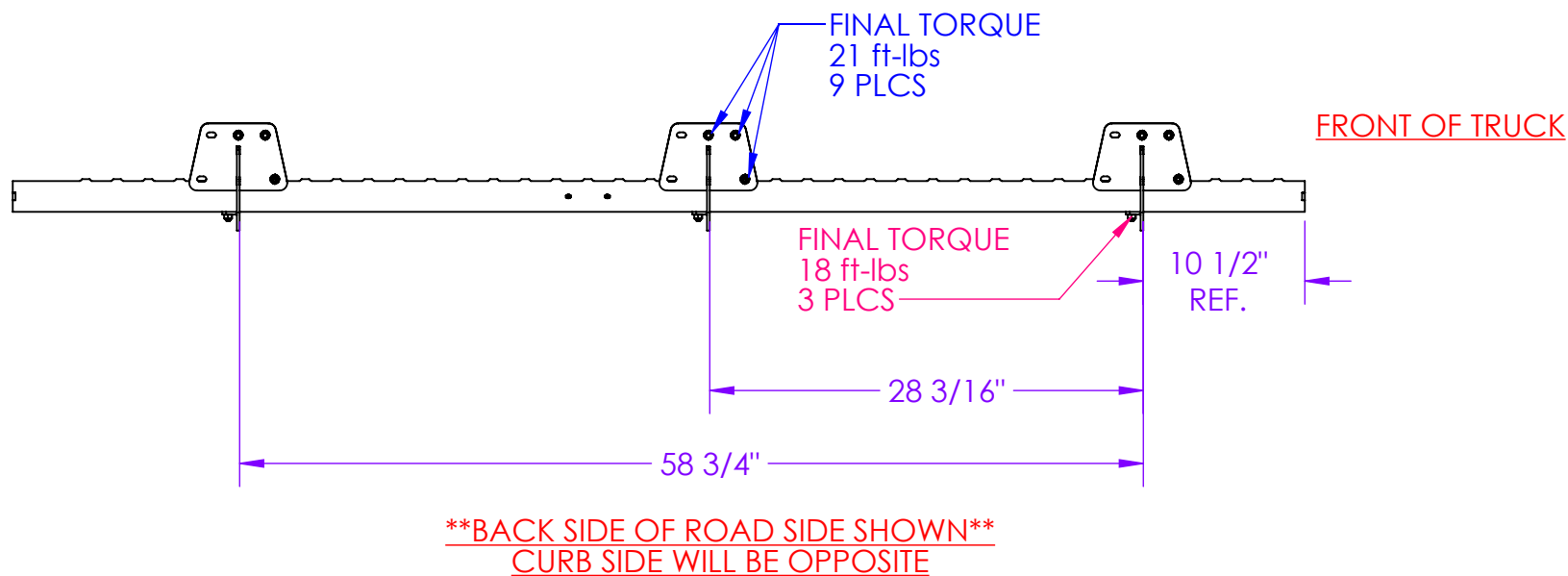
DIMENSIONS ARE IN INCHES  
TOLERANCES:  
ANGULAR: MACH  $\pm 1.0$   
TWO PLACE DECIMAL  $\pm .03$   
THREE PLACE DECIMAL  $\pm .015$   
Material **Material <not specified>**  
FINISH **N/A**  
DO NOT SCALE DRAWING

	NAME	DATE
DRAWN	LJS	4/25/25
CHECKED	.	.
AREA	.	.
PERIMETER	.	.
TRACKING PART NO:	.	.

**GEN-Y HITCH**  
**NAPPANEE IN**

<b>GEN-Y HITCH</b>		
DESCRIPTION <b>MAIN ASSY - RUNNING BOARD - RAM 1500 (2019 THRU 2025)</b>		
SIZE <b>A</b>	DWG. NO. <b>GH-25002</b>	REV. <b>A</b>
SCALE: 1:32	WEIGHT: <b>81.020 FT/LB</b>	SHEET 2 OF 3

- STEP 1 -  
LOOSELY INSTALL ALL BRACKETS, RUNNING BOARDS & HARDWARE.
- STEP 2 -  
INSURE RUNNING BOARD & BRACKETS ARE PROPERLY ALIGNED THEN TORQUE HARDWARE TO SPECIFICATIONS BELOW.



**PROPRIETARY AND CONFIDENTIAL**  
THE INFORMATION CONTAINED IN THIS DRAWING IS THE SOLE PROPERTY OF GEN-Y GROUP. ANY REPRODUCTION IN PART OR AS A WHOLE WITHOUT THE WRITTEN PERMISSION OF GEN-Y GROUP IS STRICTLY PROHIBITED.  
E-MAIL: [mike@genyhitch.com](mailto:mike@genyhitch.com)

DIMENSIONS ARE IN INCHES	
TOLERANCES:	
ANGULAR: MACH ± 1.0	
TWO PLACE DECIMAL ± .03	
THREE PLACE DECIMAL ± .015	
Material	Material <not specified>
FINISH	N/A
DO NOT SCALE DRAWING	

DRAWN	NAME	DATE
CHECKED	LJS	4/25/25
AREA		
PERIMETER		
TRACKING PART NO:		
GEN-Y HITCH NAPPANEE IN		

<b>GEN-Y HITCH</b>		
DESCRIPTION		
MAIN ASSY - RUNNING BOARD - RAM 1500 (2019 THRU 2025)		
SIZE	DWG. NO.	REV.
A	GH-25002	A
SCALE: 1:16	WEIGHT: 40.510 FT/LB	SHEET 3 OF 3