



RUNNING BOARD

Installation Guide

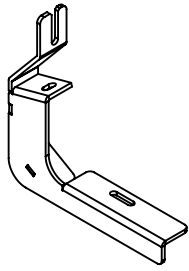


GH-25005

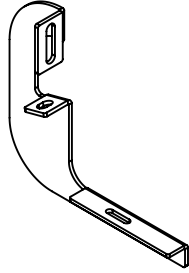
FITS GM 2500HD & 3500HD (2014 - 2019)

Updated May 2, 2025

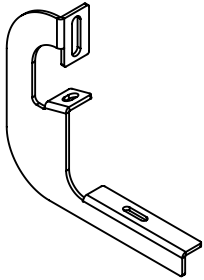
GH-25005
FITS GM 2500HD & 3500HD (2014 - 2019)



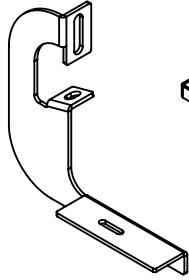
DETAIL 4



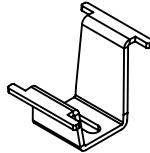
DETAIL 3



DETAIL 14

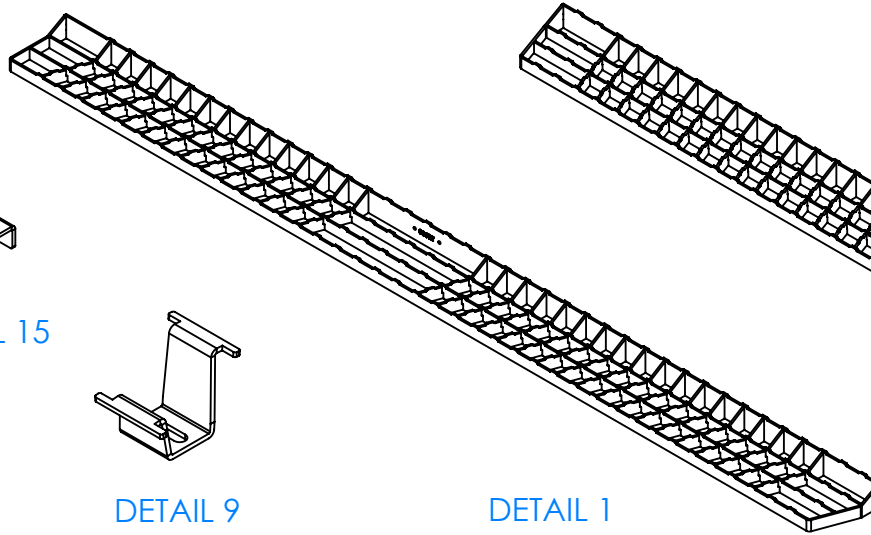


DETAIL 15



DETAIL 9

DET	REV	PartNo	DESCRIPTION	QTY
1	G	103498	MAIN ASSY - RUNNING-BOARD - GM 2500HD & 3500HD (2014 THRU 2019) - CS	-
2	F	103500	MAIN ASSY - RUNNING-BOARD - GM 2500HD & 3500HD (2014 THRU 2019) - RS	-
3	C	103494	BRACKET - CS RUNNING-BOARD - 2015 GMC SIERRA 2500	2
4	A	104138	BRACKET - CS - RUNNING-BOARD - WITH DEF TANK - '14 - '19 GMC SIERRA 2500	2
5	A	00378	WASHER - ST - 8MM	16
6	A	00377	WASHER - ST - 8MM - SPLIT	16
7	A	00376	BOLT - ST - M8 X 30MM - ISO 8.8	16
8	B	103722	ASSY - RUNNING BOARD - CS - 84in	1
9	G	103584	BRACKET - RUNNING BOARD - INNER	8
10	A	00390	BOLT - SS - .313-18 X .750 - FULL THREAD	8
11	A	00391	NUT - GR C ZINC - .313-18 - DIST THREAD LOCKING	8
12	C	103819	MOUNT - LOGO - PUSH IN - MOLDED	2
13	A	901110	STICKER - DOME - GEN Y LOGO	2
14	C	103495	BRACKET - RS RUNNING-BOARD - 2015 GMC SIERRA 2500	3
15	C	103497	BRACKET - RS RUNNING-BOARD DIFFERING - 2015 GMC SIERRA 2500	1
16	B	103723	ASSY - RUNNING BOARD - RS - 84in	1



DETAIL 1

DETAIL 2

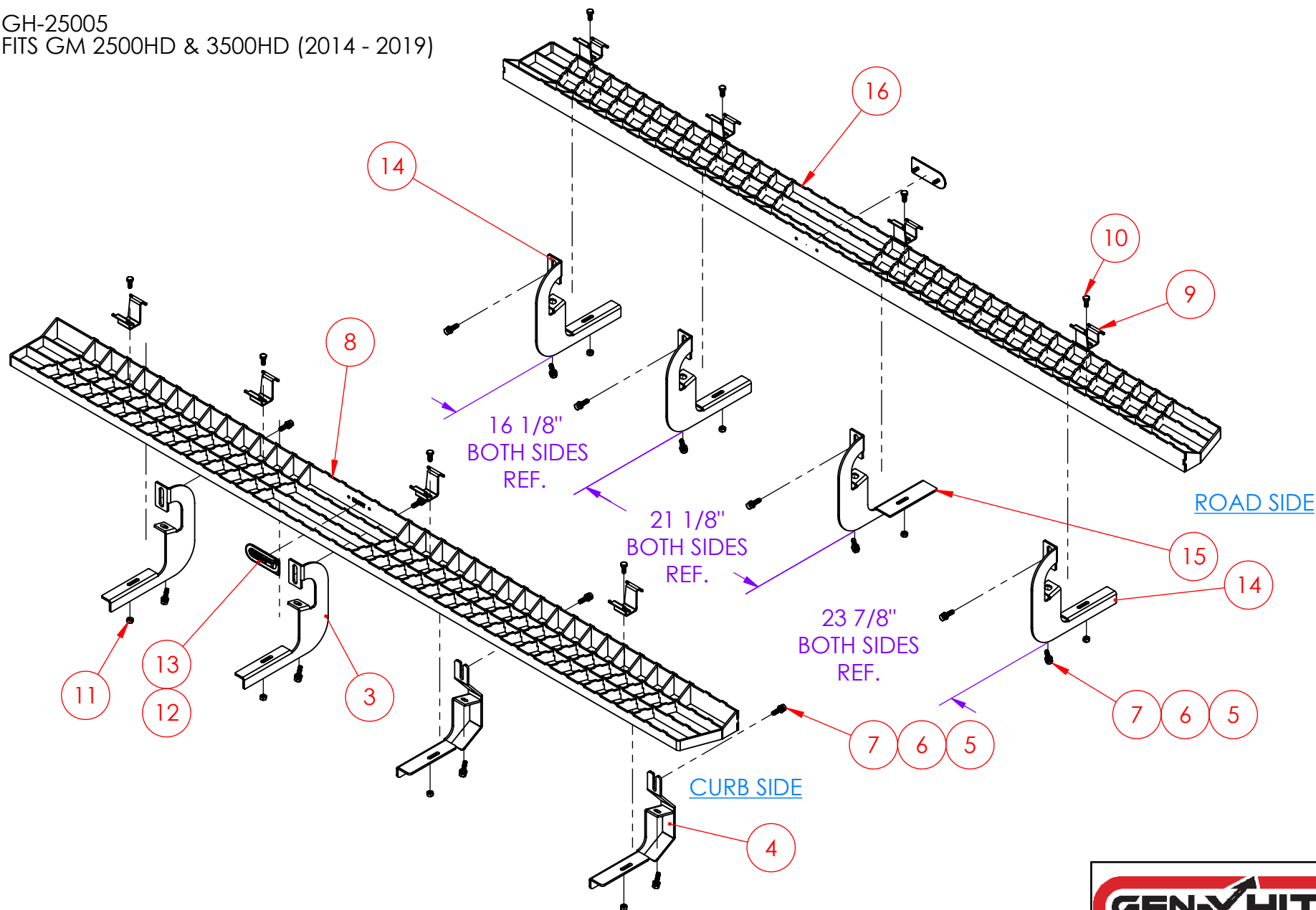
TOOLS NEEDED
RATCHET
1/2" SOCKET
1/2" WRENCH
13mm SOCKET
13mm WRENCH
TORQUE WRENCH

PROPRIETARY AND CONFIDENTIAL
THE INFORMATION CONTAINED IN THIS DRAWING IS THE SOLE PROPERTY OF GEN-Y GROUP. ANY REPRODUCTION IN PART OR AS A WHOLE WITHOUT THE WRITTEN PERMISSION OF GEN-Y GROUP IS STRICTLY PROHIBITED.
E-MAIL: mike@genyhitch.com

A	PRODUCTION RELEASE	4/17/25	LJS	
REV.	DESCRIPTION	DATE	DRW	CHK
	DIMENSIONS ARE IN INCHES			
	TOLERANCES:			
	ANGULAR: MACH ± 1.0			
	TWO PLACE DECIMAL $\pm .03$			
	THREE PLACE DECIMAL $\pm .015$			
	Material	NAME	DATE	
	Material <not specified>	LJS	4/17/25	
	FINISH	CHECKED		
	N/A	AREA		
	DO NOT SCALE DRAWING	PERIMETER		
		TRACKING PART NO:		

GEN-Y HITCH			
DESCRIPTION			
MAIN ASSY - RUNNING-BOARD - GM 2500HD & 3500HD (2014 THRU 2019)			
SIZE	DWG. NO.	REV.	
A	GH-25005	A	
SCALE: 1:24	WEIGHT: 84.420 FT/LB	SHEET 1 OF 3	

GH-25005
FITS GM 2500HD & 3500HD (2014 - 2019)



PROPRIETARY AND CONFIDENTIAL
THE INFORMATION CONTAINED IN THIS
DRAWING IS THE SOLE PROPERTY OF
GEN-Y GROUP. ANY REPRODUCTION IN
PART OR AS A WHOLE WITHOUT THE
WRITTEN PERMISSION OF GEN-Y GROUP IS
STRICTLY PROHIBITED.
E-MAIL: mike@genyhitch.com

DIMENSIONS ARE IN INCHES
TOLERANCES:
ANGULAR: MACH ± 1.0
TWO PLACE DECIMAL $\pm .03$
THREE PLACE DECIMAL $\pm .015$
Material **Material <not specified>**
FINISH **N/A**
DO NOT SCALE DRAWING

	NAME	DATE
DRAWN	LJS	4/17/25
CHECKED	.	.
AREA	.	.
PERIMETER	.	.
TRACKING PART NO:	.	.

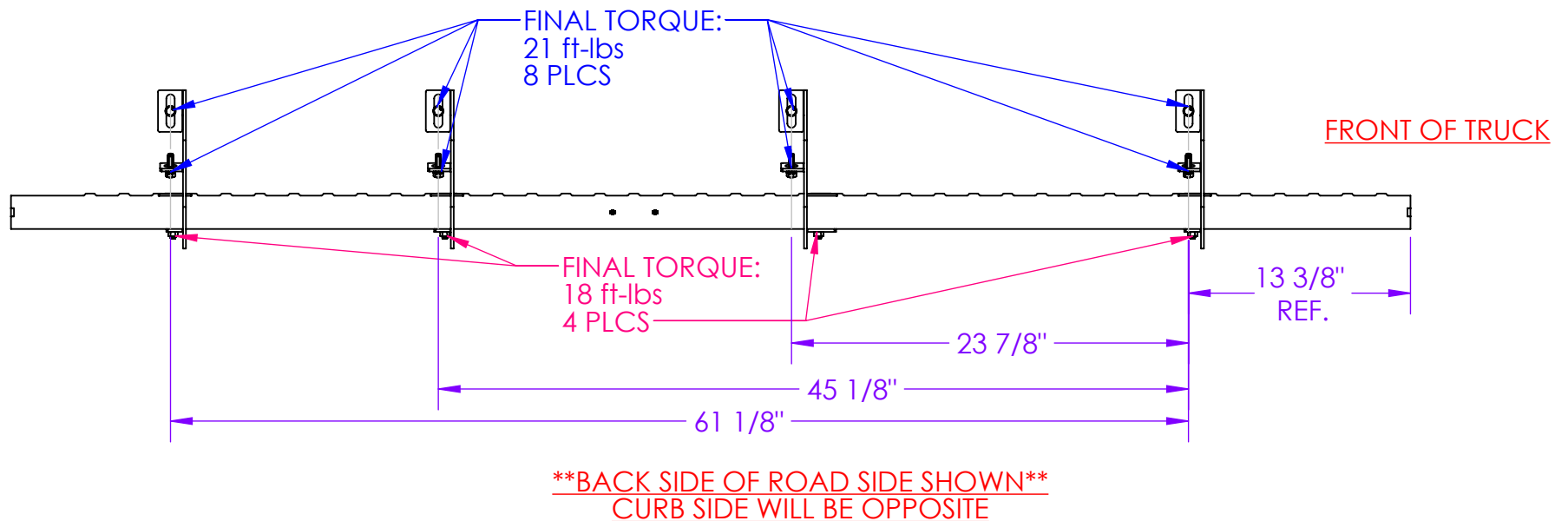
GEN-Y HITCH
NAPPANEE IN



DESCRIPTION MAIN ASSY - RUNNING-BOARD - GM 2500HD & 3500HD (2014 THRU 2019)		
SIZE A	DWG. NO. GH-25005	REV. A
SCALE: 1:12	WEIGHT: 84.420 FT/LB	SHEET 2 OF 3

GH-25005
FITS GM 2500HD & 3500HD (2014 - 2019)

- STEP 1 -
LOOSELY INSTALL ALL BRACKETS, RUNNING BOARD & HARDWARE.
- STEP 2 -
ENSURE RUNNING BOARD & BRACKETS ARE PROPERLY ALIGNED THEN TORQUE HARDWARE TO SPECIFICATIONS BELOW.



PROPRIETARY AND CONFIDENTIAL
THE INFORMATION CONTAINED IN THIS
DRAWING IS THE SOLE PROPERTY OF
GEN-Y GROUP. ANY REPRODUCTION IN
PART OR AS A WHOLE WITHOUT THE
WRITTEN PERMISSION OF GEN-Y GROUP IS
STRICTLY PROHIBITED.
E-MAIL: mike@genyhitch.com

DIMENSIONS ARE IN INCHES
TOLERANCES:
ANGULAR: MACH ± 1.0
TWO PLACE DECIMAL $\pm .03$
THREE PLACE DECIMAL $\pm .015$
Material **Material <not specified>**
FINISH **N/A**
DO NOT SCALE DRAWING

	NAME	DATE
DRAWN	LJS	4/17/25
CHECKED	.	.
AREA	.	.
PERIMETER	.	.
TRACKING PART NO:	.	.

**GEN-Y HITCH
NAPPANEE IN**

GEN-Y HITCH		
DESCRIPTION		
MAIN ASSY - RUNNING-BOARD - GM 2500HD & 3500HD (2014 THRU 2019)		
SIZE	DWG. NO.	REV.
A	GH-25005	A
SCALE: 1:16	WEIGHT: 42.137 FT/LB	SHEET 3 OF 3