



RUNNING BOARD

Installation Guide

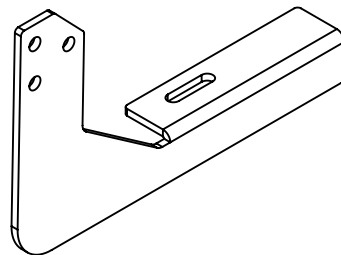
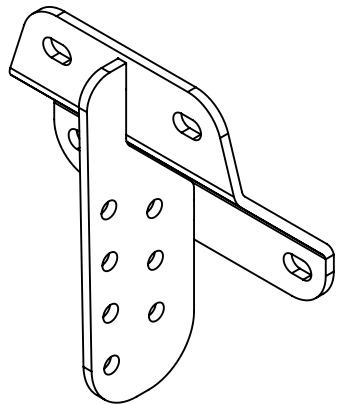


GH-25006

FITS F150 (2015 - 2025),
F250 & F350 STANDARD CAB (2017 - 2025)

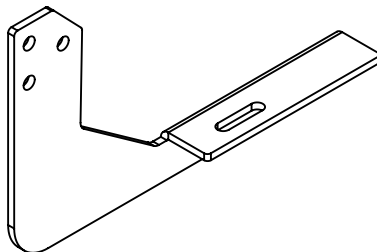
Updated May 2, 2025

GH-25006
 FITS F150 (2015 THRU 2025), F250 & F350 STANDARD
 (2017 THRU 2025)

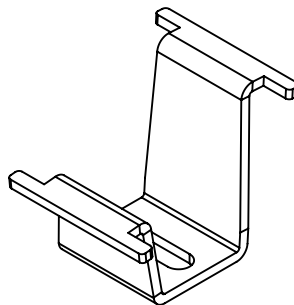


DETAIL 4

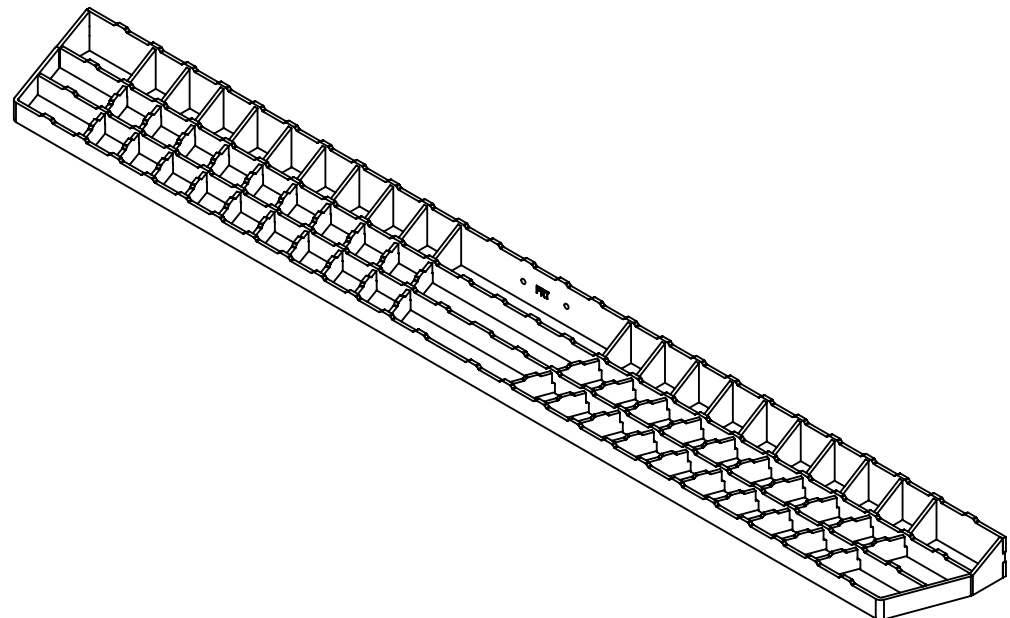
DETAIL 2



DETAIL 3



DETAIL 5



DETAIL 1

DET	REV	PartNo	DESCRIPTION	QTY
1	B	104078	ASSY - RUNNING BOARD - 54in	2
2	B	103709	ASSY - UPPER MOUNT BRACKET - FORD	4
3	C	103712	PLATE - LOWER - BRACKET - RS - FORD	2
4	C	103713	PLATE - LOWER - BRACKET - CS - FORD	2
5	G	103584	BRACKET - RUNNING BOARD - INNER	4
6	A	00377	WASHER - ST - 8MM - SPLIT	12
7	A	00379	NUT - ST - M8 X 1.25MM	12
8	A	00390	BOLT - SS - .313-18 X .750 - FULL THREAD	16
9	A	00391	NUT - GR C ZINC - .313-18 - DIST THREAD LOCKING	16
10	C	103819	MOUNT - LOGO - PUSH IN - MOLDED	2
11	A	901110	STICKER - DOME - GEN Y LOGO	2

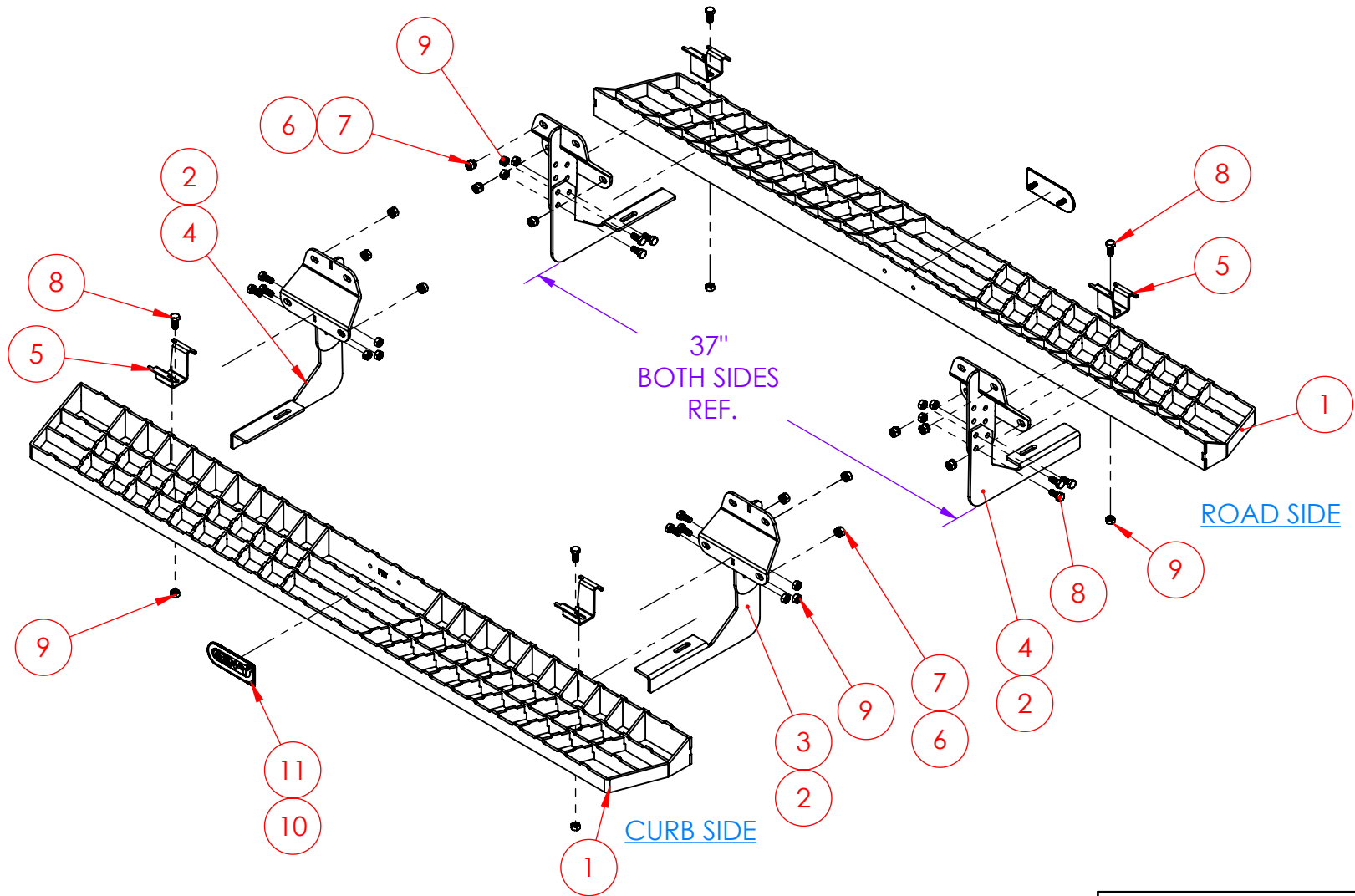
TOOLS NEEDED
1/2" SOCKET
1/2" WRENCH
13mm SOCKET
13mm WRENCH
RATCHET
TORQUE WRENCH

PROPRIETARY AND CONFIDENTIAL
 THE INFORMATION CONTAINED IN THIS
 DRAWING IS THE SOLE PROPERTY OF
 GEN-Y GROUP. ANY REPRODUCTION IN
 PART OR AS A WHOLE WITHOUT THE
 WRITTEN PERMISSION OF GEN-Y GROUP IS
 STRICTLY PROHIBITED.
 E-MAIL: mike@genyhitch.com

A	PRODUCTION RELEASE	4/28/25	LJS	
REV.	DESCRIPTION	DATE	DRW	CHK
DIMENSIONS ARE IN INCHES		NAME	DATE	
TOLERANCES:		DRAWN	LJS	4/28/25
ANGULAR: MACH ± 1.0		CHECKED	.	.
TWO PLACE DECIMAL $\pm .03$		AREA	.	
THREE PLACE DECIMAL $\pm .015$		PERIMETER	.	
Material	Material <not specified>	TRACKING PART NO:	GEN-Y HITCH NAPPANEE IN	
FINISH	N/A			
DO NOT SCALE DRAWING		.		

GEN-Y HITCH			
DESCRIPTION			
MAIN ASSY - RUNNING BOARD - RS & CS - F150 - (2015 THRU 2025), F250 & F350 STD CAB - (2017 THRU 2025)			
SIZE	DWG. NO.	REV.	
A	GH-25006	A	
SCALE: 1:24	WEIGHT:	55.791 FT/LB	SHEET 1 OF 3

GH-25006
FITS F150 (2015 THRU 2025), F250 & F350 STANDARD CAB (2017 THRU 2025)



PROPRIETARY AND CONFIDENTIAL
THE INFORMATION CONTAINED IN THIS
DRAWING IS THE SOLE PROPERTY OF
GEN-Y GROUP. ANY REPRODUCTION IN
PART OR AS A WHOLE WITHOUT THE
WRITTEN PERMISSION OF GEN-Y GROUP IS
STRICTLY PROHIBITED.
E-MAIL: mike@genyhitch.com

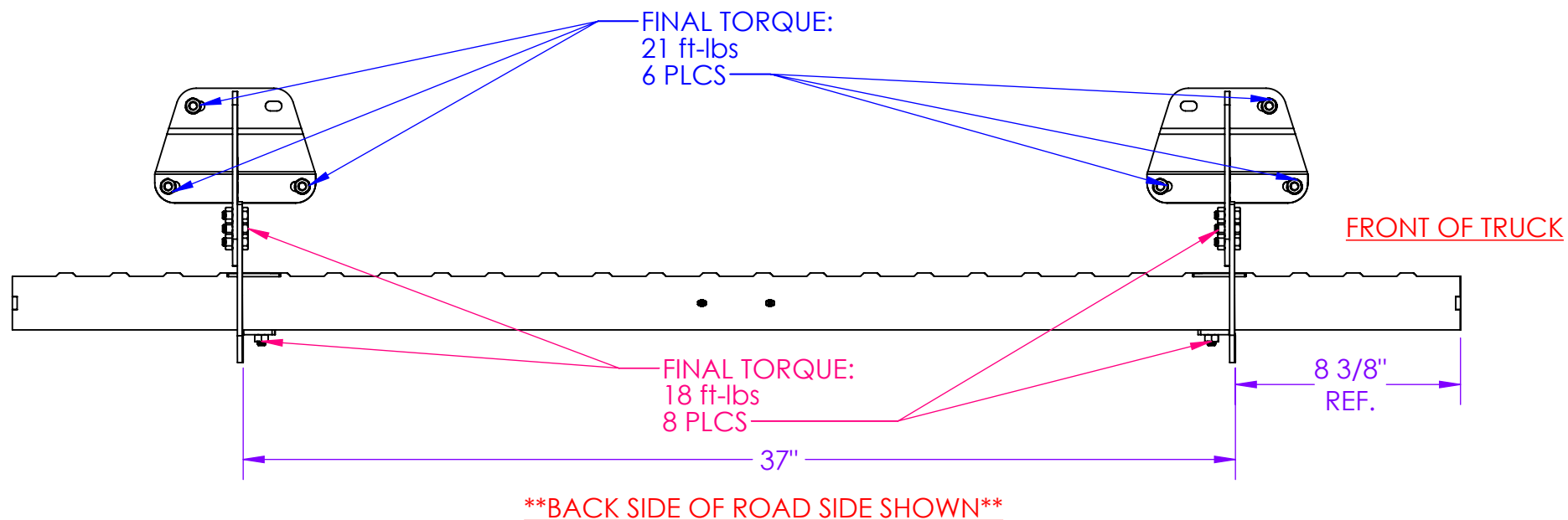
DIMENSIONS ARE IN INCHES
TOLERANCES:
ANGULAR: MACH ± 1.0
TWO PLACE DECIMAL $\pm .03$
THREE PLACE DECIMAL $\pm .015$
Material
Material <not specified>
FINISH N/A
DO NOT SCALE DRAWING

	NAME	DATE
DRAWN	LJS	4/28/25
CHECKED	.	.
AREA	.	.
PERIMETER	.	.
TRACKING PART NO:	.	.
GEN-Y HITCH NAPPANEE IN		

GEN-Y HITCH			
DESCRIPTION MAIN ASSY - RUNNING BOARD - RS & CS - F150 - (2015 THRU 2025) F250 & F350 STD CAB - (2017 THRU 2025)			
SIZE A	DWG. NO. GH-25006	REV. A	
SCALE: 1:24	WEIGHT: 55.791 FT/LB	SHEET 2 OF 3	

GH-25006
FITS F150 (2015 THRU 2025), F250 & F350 STANDARD CAB (2017 THRU 2025)

- STEP 1 -
LOOSELY INSTALL ALL BRACKETS, RUNNING BOARD & HARDWARE.
- STEP 2 -
ENSURE RUNNING BOARD & BRACKETS ARE PROPERLY ALIGNED THEN TORQUE HARDWARE TO SPECIFICATIONS BELOW.



PROPRIETARY AND CONFIDENTIAL
THE INFORMATION CONTAINED IN THIS DRAWING IS THE SOLE PROPERTY OF GEN-Y GROUP. ANY REPRODUCTION IN PART OR AS A WHOLE WITHOUT THE WRITTEN PERMISSION OF GEN-Y GROUP IS STRICTLY PROHIBITED.
E-MAIL: mike@genyhitch.com

DIMENSIONS ARE IN INCHES	
TOLERANCES:	
ANGULAR: MACH ± 1.0	
TWO PLACE DECIMAL ± .03	
THREE PLACE DECIMAL ± .015	
Material	Material <not specified>
FINISH	N/A
DO NOT SCALE DRAWING	

	NAME	DATE
DRAWN	LJS	4/28/25
CHECKED	.	.
AREA	.	
PERIMETER	.	
TRACKING PART NO:		
GEN-Y HITCH NAPPANEE IN		

DESCRIPTION MAIN ASSY - RUNNING BOARD - RS & CS - F150 - (2015 THRU 2025), F250 & F350 STD CAB - (2017 THRU 2025)		
SIZE A	DWG. NO. GH-25006	REV. A
SCALE: 1:12	WEIGHT: 27.896 FT/LB	SHEET 3 OF 3